

15/2915H

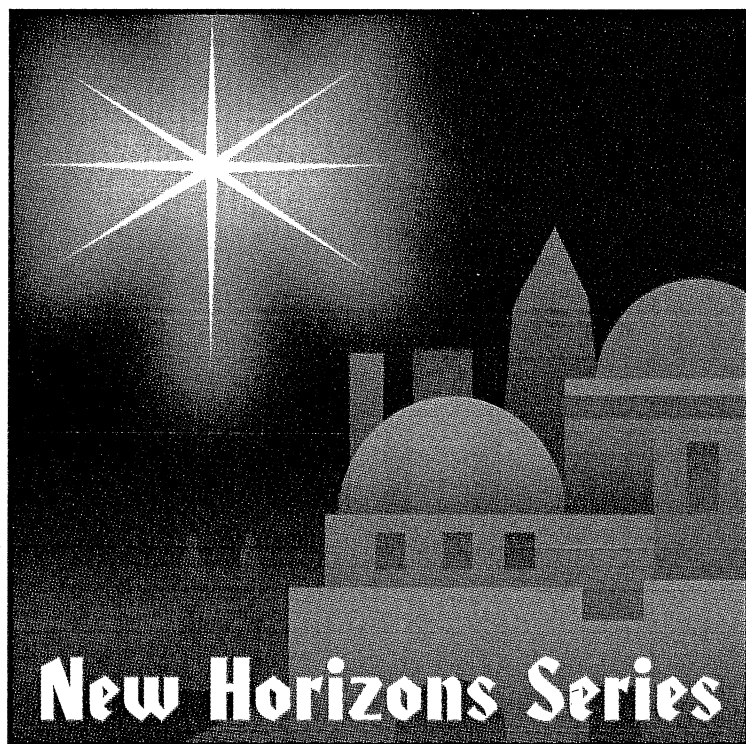
Included on CD Accompaniment Trak 24 (99/2961H)

Performance/Accompaniment CD (99/2950H)

All on a Silent Night

Becki Slagle Mayo

Two-part
Edition



Distinctive Choral Literature for Developing Voices

HERITAGE MUSIC PRESS

Distinctive Choral Music *for the* Discriminating Music Educator

A Lorenz Company • www.lorenz.com

All on a Silent Night

Two-part Chorus and Piano* with optional Cello**

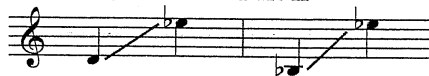
Additional text by Becki Slagle Mayo

Becki Slagle Mayo

Incorporating *STILLE NACHT*

Words by Joseph Mohr; Music by Franz Gruber

Ranges: Part I Part II



① Expressively ♩ = 88

Parts I and II

5 *mp*

I
II

On a si - lent, ho - ly night, a

9

I
II

bright, shin - ing star will lend heav - en's light.

Duration: approx. 2:55

*Also available: Performance/Accompaniment CD (99/2950H).

**Cello part is available as a free download. Visit www.lorenz.com and search 15/2915H.

© 2012 Heritage Music Press, a division of The Lorenz Corporation. All rights reserved. Printed in U.S.A.

Unauthorized reproduction of this publication is a criminal offense subject to prosecution.

THE CCLI LICENSE DOES NOT GRANT PERMISSION TO PHOTOCOPY THIS MUSIC.

www.lorenz.com

13 *mf*

I
II

Voic - es of an - gels joy - ful - ly - sing a

17

I
II

sweet al - le - lu - ia to the King;

21

I
II

all on this si - lent, ho - ly night,

25 (2)

I
II

all on this si - lent night.

29 Part I *mp*

Part II *mp*

Si - lent night,

mp - Cello

33

I ho - ly night, all is calm,

II ho - ly night, all is calm and

37 *mf*

I all is bright round yon vir - gin

II all is bright round yon vir - gin

mf + Cello

41

I
Moth - er and Child, Ho - ly In - fant so

II
Moth - er and Child, Ho - ly In - fant so

45

I
ten - der and mild, sleep in *cresc.*

II
ten - der and mild, sleep in *cresc.*

48

I
heav - en - ly peace, sleep in *f rit.* *mf a tempo*

II
heav - en - ly peace, in peace, sleep in *f rit.* *mf a tempo*

52 3

I
heav - en - ly peace.

II
heav - en - ly peace.

55 *mp*

I
On a si - lent,

II
mp
Si - lent night,

mp

59

I
ho - ly night, a bright, shin - ing star will

II
ho - ly night, won - drous star,

63

I
lend heav - en's light. Voic - es of an - gels

II
lend thy light; With the an - gels

mf

67

I
joy - ful - ly — sing a sweet al - le - lu - ia

II
let — us sing al - le - lu - ia

71 4

I
to — the King; all on this si - lent,

II
to — the King; on this si - lent

cresc.

cresc. *

cresc.

*Higher notes preferred, if range permits.



75 *f* *mf*

I ho - ly night, all on this si - lent

II night, all on this si - lent,

f *mf*

79 *poco rall.* *mp* *Slowly*

I night, all on this si - lent

II ho - ly night, all on this si - lent

poco rall. *mp* *Slowly*

83 *pp* *rit.*

I night.

II night.

pp *rit.*