

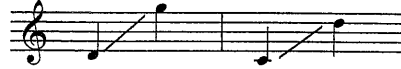
# Adeste Fideles

3

Two-part Chorus with Descant,\* Piano, Flute, Bells, High Drum and Low Drum\*\*

Words and Music by  
Greg Gilpin

Ranges: Part I Part II



① With fanfare and joy!  $\text{♩} = \text{ca. } 84$

4 All voices *mf*

Duration: approx. 2:10

\*Also available: Three-part Mixed with Descant (15/2556H); SATB with Descant (15/2541H);  
Performance/Accompaniment €D (99/2412H).

\*\*Instrumental parts are on pages 12-15.

© 2009 Heritage Music Press, a division of The Lorenz Corporation. All rights reserved. Printed in U.S.A.

Unauthorized reproduction of this publication is a criminal offense subject to prosecution.

THE CCLI LICENSE DOES NOT GRANT PERMISSION TO PHOTOCOPY THIS MUSIC.

15/2573H-3

www.lorenz.com

LT

12

Ve - ni - te, ve - ni - te

16

in Beth - le - hem, in Beth - le - hem.

20

Part I 2 *mf*  
A - des - te fi -

Part II

-Fl. +Fl.

Drums *mf ad lib. rhythmically*

24

I  
de - les. *mf* A - des - te fi -

II  
A - des - te fi - de - les.

*Continue percussion through m. 42*

28

I  
de - les. Ve - ni - te, ve -

II  
A - des - te fi - de - les.

32

I  
ni - te in Beth - le - hem,

II  
Ve - ni - te, ve - ni - te in

36

I in Beth - le - hem.

II Beth - le - hem, in Beth - le - hem.

40

I 3 *mp* Glo - ri - a in ex -

II *mp* Glo - ri - a in ex -

-Fl.

44

I cel - sis. Glo - ri - a in ex - cel - sis.

II cel - sis. Glo - ri - a in ex - cel - sis.

48

I  
Glo - ri - a in ex - cel - sis.

II  
Glo - ri - a in ex - cel - sis.

52

*cresc.* **f**  
I  
Glo - ri - a in ex - cel - sis De - o,

*cresc.* **f**  
II  
Glo - ri - a in ex - cel - sis De - o,

*cresc.* **f**

56

**f**  
I  
De - o! A -

II  
De - o!

**f** **ad lib. rhythmically**

Descant

60

*f*

Come to Beth - le - hem.

I  
des - te fi - de - les. A -

II  
A - des - te fi - de - les.

+Fl., Bls.

*f*

64

*f*

Come to Beth - le - hem.

I  
des - te fi - de - les. Ve -

II  
A - des - te fi - de - les.

68

Glo - ry in the high - est!

I  
ni - te, ve - ni - te \_\_\_\_\_ in

II  
\_\_\_\_\_ Ve - ni - te, ve - ni - te \_\_\_\_\_

Piano accompaniment for measures 68-71, including grand staff and percussion.

72

Glo - ry in the high - est! \_\_\_\_\_

I  
Beth - le - hem, \_\_\_\_\_ in Beth - le - hem. \_\_\_\_\_

II  
\_\_\_\_\_ in Beth - le - hem, \_\_\_\_\_ in Beth - le - hem. \_\_\_\_\_

Piano accompaniment for measures 72-75, including grand staff and percussion.

76 Descant ends (5)

*mp cresc. poco a poco*  
Glo - ri - a,  
*mp cresc. poco a poco*  
Glo - ri - a,  
*mp cresc. poco a poco*  
*mp cresc. poco a poco*

80

glo - ri - a, glo - ri - a  
glo - ri - a, glo - ri - a  
*mp cresc. poco a poco*



84 *f*

I De - o!

II De - o!

*f*

88 *molto rit.*

I Glo - ri - a!

II *molto rit.* Glo - ri - a!

*molto rit.*